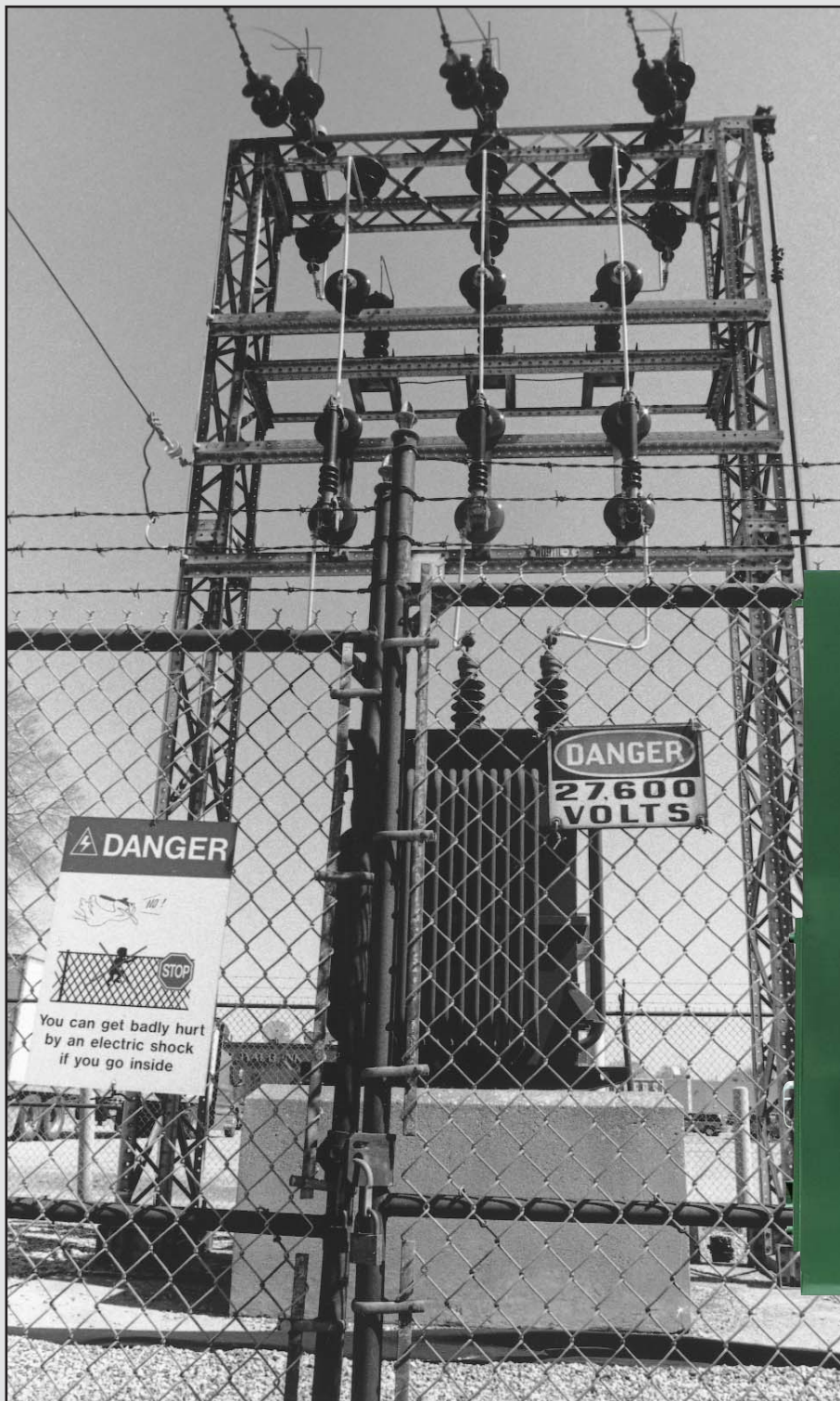


Replace this...



with this...

PIONEER'S
*tamper proof
unitized
pad-mounted
mini sub-station*



TRANSFORMATEURS L^{TÉE}

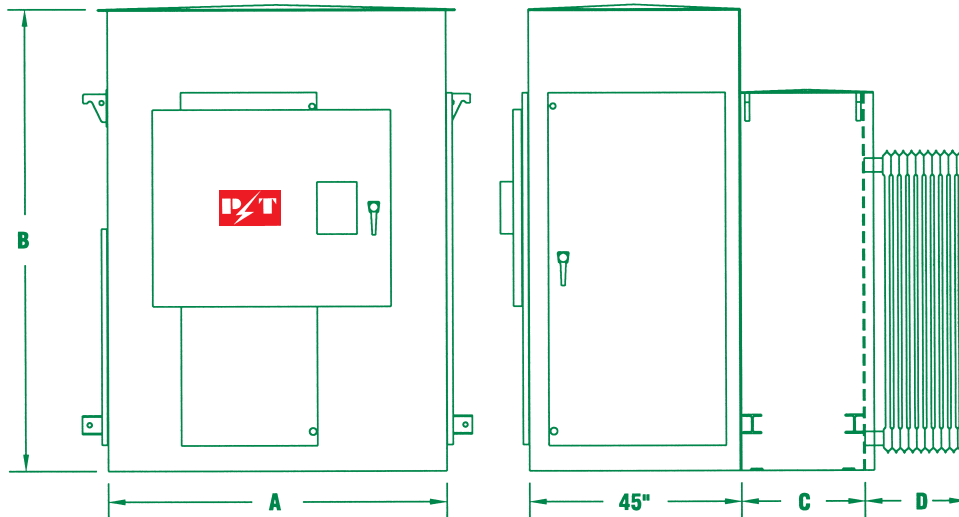
PIONEER

TRANSFORMERS L^{TD}

AN ISO 9001 COMPANY



Clean, safe, economical, compact,
tamper proof & low maintenance
mini sub-station



| kVA | SWITCH 5, 15 & 25kV | | | | | SWITCH 35kV | | | | |
|------|---------------------|------|-----|-----|--------------|-------------|------|-----|-----|--------------|
| | A | B | C | D | Weight (lbs) | A | B | C | D | Weight (lbs) |
| 500 | 72" | 100" | 36" | 14" | 10800 | 88" | 100" | 36" | 14" | 12000 |
| 750 | 72" | 100" | 36" | 14" | 12550 | 88" | 100" | 36" | 14" | 14300 |
| 1000 | 72" | 100" | 36" | 23" | 12750 | 88" | 100" | 40" | 23" | 15200 |
| 1500 | 72" | 100" | 40" | 23" | 14100 | 88" | 100" | 40" | 23" | 17300 |
| 2000 | 72" | 100" | 40" | 31" | 17300 | 88" | 100" | 40" | 31" | 18500 |
| 3000 | 72" | 100" | 40" | 35" | 20000 | 88" | 100" | 40" | 35" | 22500 |
| 5000 | 72" | 100" | 45" | 40" | 30000 | 88" | 100" | 45" | 40" | 33000 |

TYPICAL DIMENSIONS



2/2.66 MVA
Mini sub-station



High voltage entrance



High voltage loadbreak
switch compartment



Low voltage compartment

PIONEER TRANSFORMERS MANUFACTURE LOW PROFILE, TAMPER PROOF, TOTALLY INTEGRATED PAD-MOUNTED MINI SUB-STATIONS, CALLED **UNITIZED PAD-MOUNTS**. THESE UNITS ARE USED AT COMMERCIAL SITES SUCH AS APARTMENT COMPLEXES, SHOPPING CENTERS, OFFICE COMPLEXES, INDUSTRIAL PARKS, FACTORIES, AIRPORTS, HOSPITALS, ETC. THE UNITS HAVE AN ESTHETIC APPEARANCE AND AVOID THE NECESSITY OF FENCES AND OVERHEAD ELECTRICAL STRUCTURES. GENERALLY, ANY END USER BUYING POWER AT THE PRIMARY VOLTAGE LEVEL OR OWNING AND OPERATING THEIR OWN

HV DISTRIBUTION SYSTEM SHOULD CONSIDER UNITIZED PAD-MOUNTS. THIS DESIGN ELIMINATES HOT STICKS SO THAT NON-UTILITY PERSONNEL CAN SWITCH OFF THE UNIT. INSIDE THE COMPARTMENT AN EXTERNAL LOAD BREAK SWITCH ON THE HV SIDE CAN BE CHECKED THROUGH A VIEWING WINDOW TO SEE IF THE BLADES ARE IN THE OPEN OR CLOSED POSITION. A MECHANICAL INTERLOCK SYSTEM PREVENTS ACCESS TO THE FUSE COMPARTMENT UNLESS THE LOAD BREAK SWITCH IS IN THE OPEN POSITION. THE UNITS CONFORM WITH CSA, ANSI OR EEMAC APPLICABLE STANDARDS.

SIZES ARE AS FOLLOWS:

| | | |
|--------------|-----------------|------------|
| 5kV CLASS | 60kV BIL | UP TO 3MVA |
| 15kV CLASS | 95kV BIL | UP TO 5MVA |
| 25kV CLASS | 125 & 150kV BIL | UP TO 5MVA |
| 27.6kV CLASS | 150kV BIL | UP TO 5MVA |
| 34.5kV CLASS | 150kV BIL | UP TO 5MVA |

WE CAN PROVIDE:

- FUSED OR UNFUSED LOAD BREAK SWITCH ON HV SIDE
- SECONDARY METERING COMPARTMENTS
- LV DISTRIBUTION CENTER (FUSIBLE SWITCHES, ENCLOSED CB, METERING)
- SHUNT TRIP COIL
- LIGHTNING ARRESTERS
- KEY INTERLOCKS
- VARIOUS GAUGES
- FAN COOLING OR PROVISION
- 55/65° C TEMPERATURE RISE
- SILICONE, R-TEMP OR ENVIROTEMP FR3

Head Office & Plant:

Pioneer Transformers Ltd
612 Bernard St
Granby, Quebec J2J 0H6
Tel: (450) 378-9018
Fax: (450) 378-0626
Customer Service ext: 302
Quality Assurance ext: 301

Quotation & Engineering:

Pioneer Transformers Ltd
2600 Skymark Avenue
Bldg 5, Suite #102
Mississauga, Ontario L4W 5E7
Tel: (905) 625-0868
Fax: (905) 625-6859
Quotation ext: 26
Engineering ext: 21, 25 & 27

Please visit our web site at
www.pioneertransformers.com
to get in touch with your local sales representative

Our other products:



*750 KVA 13.8kV Δ -208Y/120V
Network Transformer*



*1500KVA Dead Front Radial Feed
3 phase Pad-Mounted 24.9kVGY/14.4 kV - 600Y/347V*



*500 kVA 14.4kV-600V
1 phase Platform-Mounted*



*2 MVA 13.8kV Δ -600Y/347V
3 phase Small Power*